

DIMENSIONS FOR OVERALL HEIGHT AND LENGTH ARE APPROXIMATE

OVERALL HEIGHT = 114"

OVERALL WIDTH WITH RUB

RAILS & FENDERETTES = 98"

RECESSED OPTICOM

A HIVIZ FT-MB-15-\*--B 20"  
MOUNTED ON UPPER FACE OF  
CONDENSERS.

(5) TECNIQ S330 AMBER  
MINI-LED MARKER LIGHTS  
(2) HOSELINE TMC2004  
CONDENSERS. CHASSIS TO  
HAVE SECOND ENGINE  
DRIVER COMPRESSOR

(2) WHELEN M9 R/B  
LED LIGHTS WITH  
CLEAR LENSES

(5) WHELEN M6 LED  
LIGHTS WITH CLEAR  
LENSES: R/B/W/B/R

NOTE: MODULE TO HAVE  
74" HEADROOM AND BE  
172" IN LENGTH.

MONITOR TO REPLACE  
MIRROR

BRIGADE 360 CAMERA

LOCKING, SLIDING  
WINDOW IN CAB

OEM POWER  
ADJUSTABLE  
MIRRORS

(2) WHELEN ION SERIES  
SUPER LED GRILL LIGHTS:  
TOP RED - RED  
BOTTOM: BLUE - BLUE  
WITH CLEAR LENSES

FLASHING HEADLIGHTS W/  
DAYTIME RUNNING LIGHTS

STONE GUARDS TO HAVE  
BLACK GATORHYDE

BUCKSTOP BUMPER WITH  
RED/YELLOW CHEVRONS AND  
REMAINING BUMPER TO HAVE  
BLACK GATORHYDE

2" LED RUNNING  
BOARD LIGHTS

BUELL AIR HORNS  
IN BUMPER

(2) FEDERAL BP200EF  
SIREN SPEAKERS IN THE  
BUMPER: (1) FOR STANDARD  
SIREN AND (1) FOR THE  
EQ2B SIREN.

THIS DRAWING IS FOR REPRESENTATIONAL PURPOSES ONLY. DETAILS ARE CONCEPTUAL AND ARE SUBJECT TO CHANGE DURING DESIGN AND CONSTRUCTION  
DIMENSIONS ARE APPROXIMATE UNLESS NOTED OTHERWISE TO MEET A SPECIFIC CUSTOMER NEED.

BENBROOK



2021 FRONT EXTERIOR VIEW  
CHIEF XL-1/F550 CHASSIS

DATE:  
12-28-21

DWG. REV. SER A

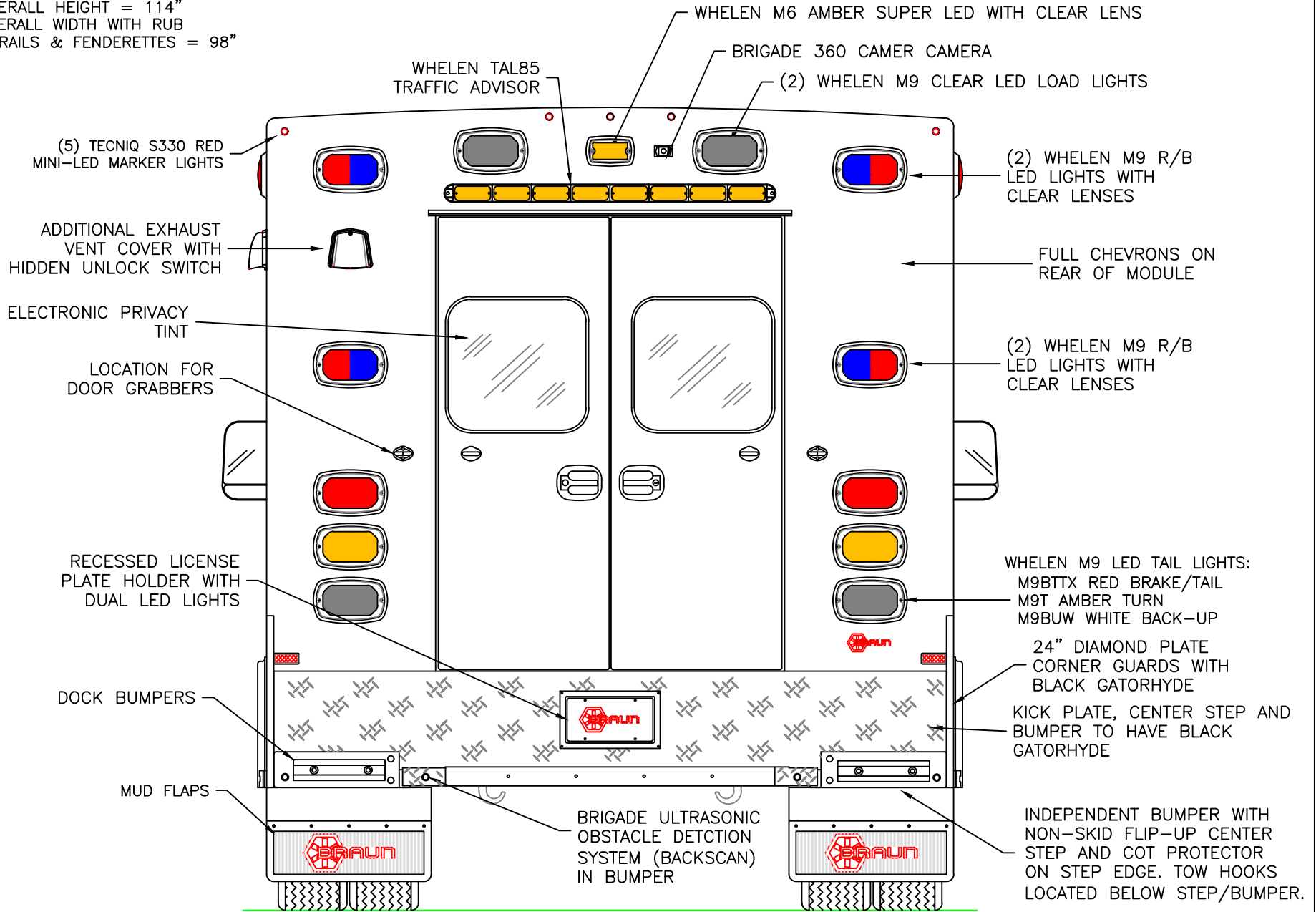
DRAWING NO.

BENBROOK-1

APPROVAL SIGNATURE:

DATE:

DIMENSIONS FOR OVERALL HEIGHT AND LENGTH ARE APPROXIMATE  
 OVERALL HEIGHT = 114"  
 OVERALL WIDTH WITH RUB  
 RAILS & FENDERETTES = 98"



THIS DRAWING IS FOR REPRESENTATIONAL PURPOSES ONLY. DETAILS ARE CONCEPTUAL AND ARE SUBJECT TO CHANGE DURING DESIGN AND CONSTRUCTION  
 DIMENSIONS ARE APPROXIMATE UNLESS NOTED OTHERWISE TO MEET A SPECIFIC CUSTOMER NEED.

BENBROOK



2021 REAR EXTERIOR VIEW  
 CHIEF XL-1/F550 CHASSIS

DATE: 01-04-22  
 DWG. SER  
 REV. B

DRAWING NO. BENBROOK-2

1:16

DIMENSIONS FOR OVERALL HEIGHT AND LENGTH ARE APPROXIMATE  
 OVERALL HEIGHT = 114"  
 OVERALL LENGTH = 310" - NOT INCLUDING FRONTIER GRILL  
 MODULE LENGTH = 172"

TECNIQ S330 RED MINI-LED MARKER LIGHT TO ALSO FLASH WITH TURN SIGNAL

WHELEN PIONEER PLUS PFH2 LED LIGHTHEAD MOUNTED IN PBH203 CHROME HOUSING

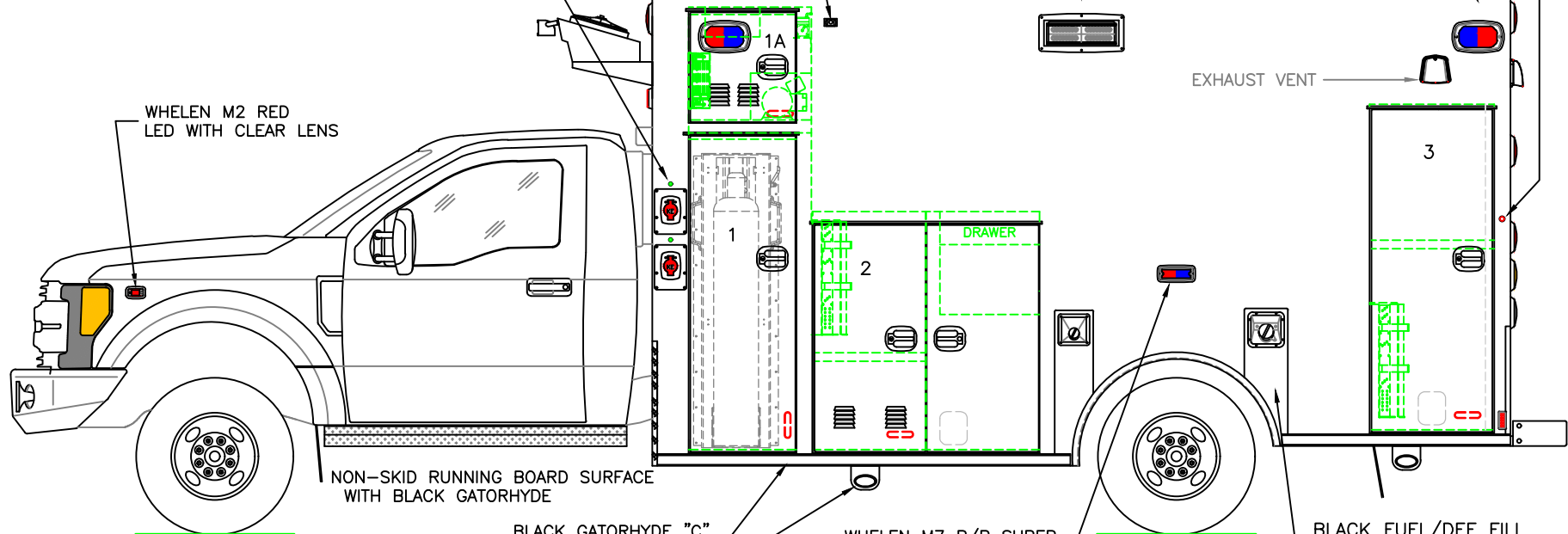
(2) WHELEN M9 RED/BLUE LED LIGHTS WITH CLEAR LENSES

(2) KUSSMAUL 30AMP SUPER AUTO-EJECT SHORELINE INLETS WITH GREEN INDICATOR LIGHTS AND RED COVERS. (1) WILL BE FOR THE 110/12V HEAT/AC SYSTEM

BRIGADE 360 CAMERA

WHELEN M2 RED LED WITH CLEAR LENS

EXHAUST VENT



NON-SKID RUNNING BOARD SURFACE WITH BLACK GATORHYDE

BLACK GATORHYDE "C" CHANNEL RUB RAILS

WHELEN M7 R/B SUPER LED WITH CLEAR LENS

BLACK FUEL/DEF FILL PROTECTOR

(2) WELDON UNDERBODY LIGHTS

COMPARTMENT  
O.S.S #1

CLEAR OPENING: 77.00h x 18.25w  
 INSIDE DIM'S.: 86.75h x 24.50w x 20.75d  
 'EZ-O2 LIFT' SYSTEM ON THE DOOR

O.S.S #1 - TO HAVE HURRICANE STRAP

CLEAR OPENING: 14.75h x 18.25w  
 INSIDE DIM'S.: 22.25h x 24.50w x 20.75d  
 INVERTER/AIR HORN COMPRESSOR/SUCTION PUMP;  
 110/12V HEAT/AC COMPONENTS WITHIN COMPARTMENT  
 LOUVER ON DOOR TO HAVE EXHAUST FAN

O.S.S #2

CLEAR OPENING: 44.25h x 39.50w  
 INSIDE DIM'S.: 47.75h x 45.50w x 20.75d  
 FIXED CENTER DIVIDER

(1) ADJ SHELF FORWARD OF DIVIDER  
 (1) ANGLED SCBA BRACKET IN UPPER FRONT REAR CORNER  
 PRE-WIRE FOR RADIO SPEAKER IN CEILING

O.S.S #3

CLEAR OPENING: 63.50h x 21.25w  
 INSIDE DIM'S.: 65.25h x 25.00w x 20.75d  
 (1) ADJUSTABLE SHELF

(1) ANGLED SCBA BRACKET IN FRONT REAR CORNER  
 PRE-WIRE FOR RADIO SPEAKER IN CEILING  
 AeroClave CONNECTION ON UPPER REAR WALL

RED WHELEN ION LIGHT ON EACH REAR FACING DOOR

THIS DRAWING IS FOR REPRESENTATIONAL PURPOSES ONLY. DETAILS ARE CONCEPTUAL AND ARE SUBJECT TO CHANGE DURING DESIGN AND CONSTRUCTION  
 DIMENSIONS ARE APPROXIMATE UNLESS NOTED OTHERWISE TO MEET A SPECIFIC CUSTOMER NEED.

BENBROOK



2021 STREETSIDE EXTERIOR VIEW  
 CHIEF XL-1/F550 CHASSIS

DATE:  
12-28-21

DRAWING NO.

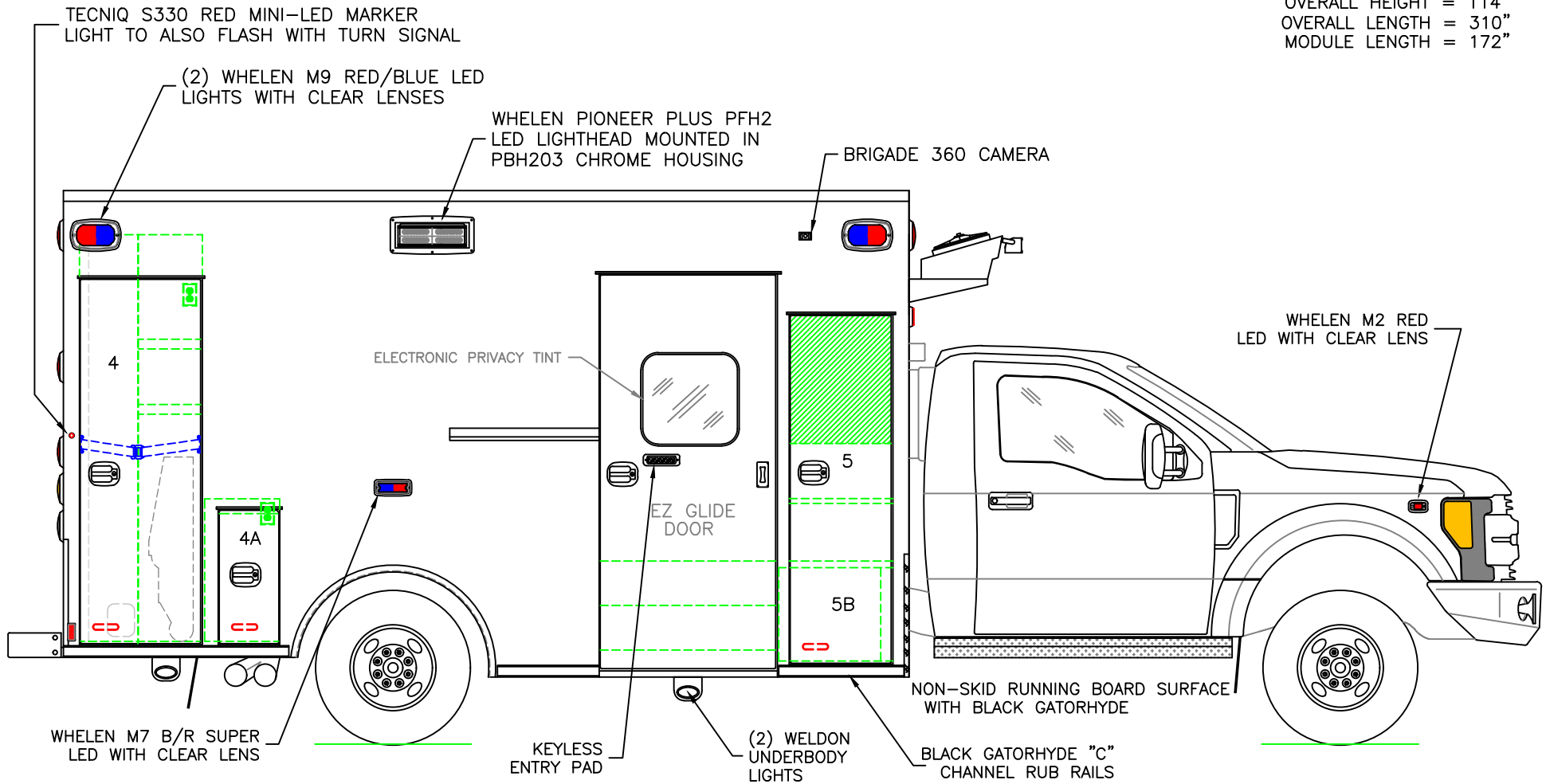
DWG. SER  
12-28-21

REV. A

BENBROOK-3

1:30

DIMENSIONS FOR OVERALL HEIGHT AND LENGTH ARE APPROXIMATE  
 OVERALL HEIGHT = 114"  
 OVERALL LENGTH = 310"  
 MODULE LENGTH = 172"



COMPARTMENT  
 O.S.S #4

CLEAR OPENING: 73.00h x 21.25w  
 INSIDE DIMS: 82.75h x 25.00w x 20.75d  
 CENTER DIVIDER 13" FROM FRONT WALL  
 SEATBELT STRAP ACROSS WHOLE COMPARTMENT  
 STAIR CHAIR STORAGE FORWARD OF DIVIDER  
 (2) ADJ. SHELVES ABOVE STAIR CHAIR  
 BACKBOARD/SCOOP STORAGE REAR OF DIVIDER  
 125VAC OUTLET ON UPPER RIGHT BACK WALL  
 ABOVE TOP SHELF

O.S.S #4A

CLEAR OPENING: 26.00h x 9.50w  
 INSIDE DIMS: 29.00h x 15.25w x 20.75d  
 125VAC OUTLET ON UPPER RIGHT SIDE  
 OF BACK WALL

O.S.S #5

CLEAR OPENING: 69.50h x 17.50w  
 INSIDE DIM'S. 5A: SEE PARTITION INTERIOR VIEW  
 INSIDE/OUTSIDE STORAGE WITH (1) LOWER ADJ SHELF  
 UPPER SECTION TO HAVE CLOSE-OUT  
 INSIDE DIM'S. 5B: 19.00h x 20.75w x 18.00d

⇄ RED WHELEN ION LIGHT ON EACH REAR FACING DOOR

THIS DRAWING IS FOR REPRESENTATIONAL PURPOSES ONLY. DETAILS ARE CONCEPTUAL AND ARE SUBJECT TO CHANGE DURING DESIGN AND CONSTRUCTION  
 DIMENSIONS ARE APPROXIMATE UNLESS NOTED OTHERWISE TO MEET A SPECIFIC CUSTOMER NEED.

BENBROOK

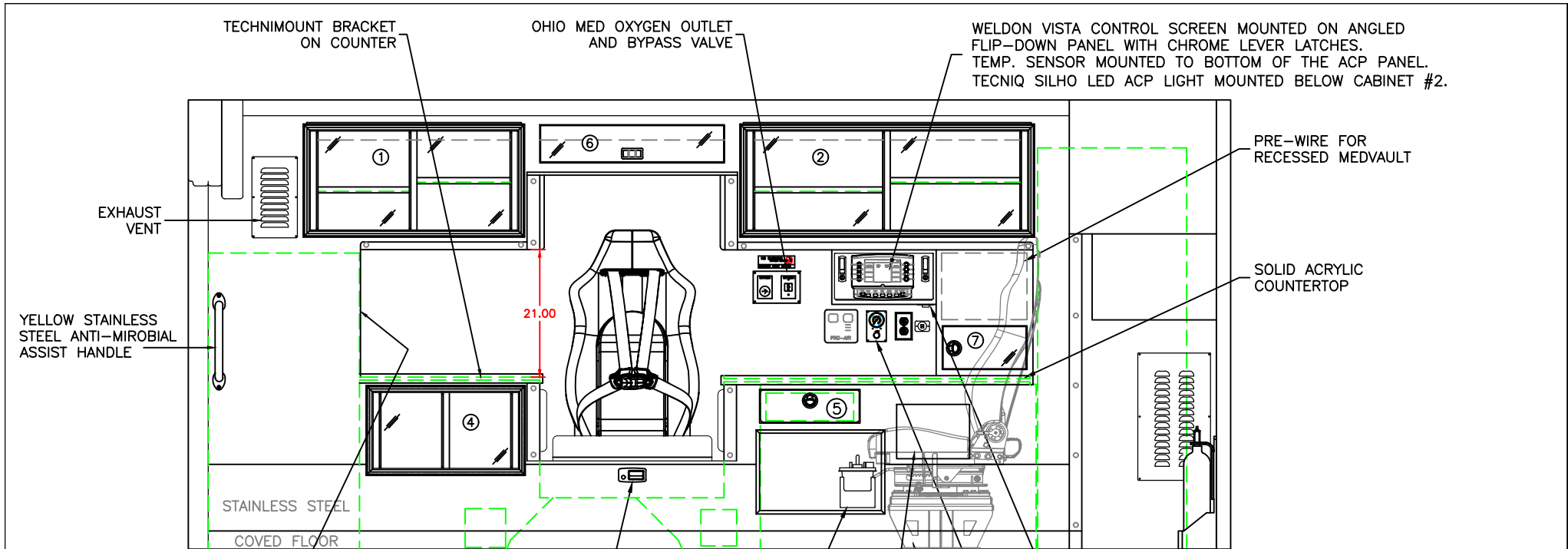


2021 CURBSIDE EXTERIOR VIEW  
 CHIEF XL-1/F550 CHASSIS

1:30

DATE:  
 01-04-22  
 DWG. SER REV.  
 B

DRAWING NO.  
 BENBROOK-4



125VAC OUTLET VALOR 4pt HARNESS SEAT BACK WITH STORAGE BELOW. SEAT RAISED BY 2" FROM STANDARD. RECESSED SSCOR SUCTION CANISTER TO RIGHT SIDE (2) 12VDC OUTLETS MOUNTED ON BOTTOM OF ACP PROAIR THERMOSTAT/SUCTION CONTROL; 125VAC OUTLET/DUAL USB PORT

COMPARTMENT  
 #1 DOOR OPENING: 16.25h x 34.25w  
 INSIDE DIMS: 18.50h x 36.00w x 17.25d  
 (1) ADJ SHELF EACH SIDE OF CENTER DIVIDER  
 SLIDING POLYCARBONATE DOORS  
 TOTAL CABINET WEIGHT RATING = 25 lbs.  
 #2 DOOR OPENING: 16.25h x 46.25w  
 INSIDE DIMS: 18.50h x 48.00w x 17.25d  
 (1) ADJ SHELF EACH SIDE OF CENTER DIVIDER  
 SLIDING POLYCARBONATE DOORS  
 TOTAL CABINET WEIGHT RATING = 25 lbs.  
 #3 NOT BEING USED IN LAYOUT  
 #4 DOOR OPENING: 12.50h x 24.00w  
 INSIDE DIMS: 14.00h x 25.50w x 17.25d  
 SLIDING POLYCARBONATE DOORS  
 TOTAL CABINET WEIGHT RATING = 25 lbs.

POCKET FOR TABLET ON ACTION AREA WALL BELOW COUNTER. INSIDE DIMS: 9"h x 12"w x 3"d AT TOP AND 1.5"d AT THE BOTTOM  
 #5 PULL-OUT DRAWER WITH HINGED ERASER BOARD WRITING SURFACE  
 INSIDE DIMS: 4.50h x 14.50w x 13.25d  
 LOCKING STAINLESS STEEL FLUSH PULL LATCH  
 (4) FULL WIDTH ADJ DIVIDERS  
 TOTAL DRAWER WEIGHT RATING = 10 lbs.  
 #6 DOOR OPENING: 6.25h x 30.50w  
 INSIDE DIMS: 6.25h x 30.50w x 17.25d  
 HINGED POLY DOOR WITH HOLD-OPEN CENTER SQUEEZE LATCH  
 TOTAL CABINET WEIGHT RATING = 10 lbs.

#7 DOOR OPENING: 7.25h x 14.00w  
 INSIDE DIMS: 7.25h x 14.00w x 8.00d  
 HINGED POLY DOOR  
 LOCKING STAINLESS STEEL FLUSH PULL LATCH  
 TOTAL CABINET WEIGHT RATING = 10 lbs.

INVENTORY CONTROL SYSTEM  
 CABINETS #1 AND #2 TO HAVE RESTOCKING FRAMES  
 CABINETS TO BE ALUMINUM

THIS DRAWING IS FOR REPRESENTATIONAL PURPOSES ONLY. DETAILS ARE CONCEPTUAL AND ARE SUBJECT TO CHANGE DURING DESIGN AND CONSTRUCTION DIMENSIONS ARE APPROXIMATE UNLESS NOTED OTHERWISE TO MEET A SPECIFIC CUSTOMER NEED.

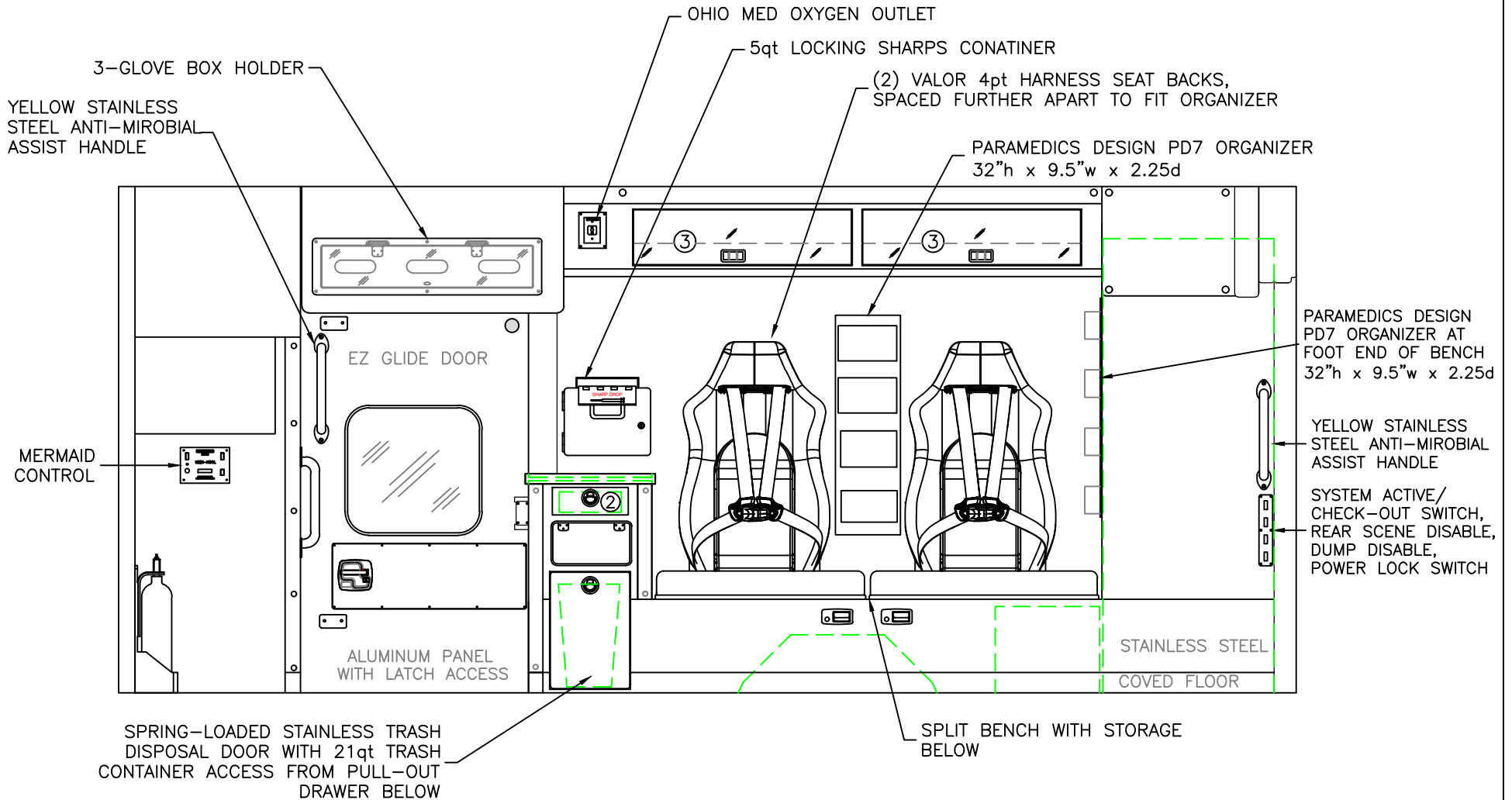
BENBROOK



2021 STREETSIDE INTERIOR VIEW  
 CHIEF XL-I

1:22

DATE: 01-04-22		DRAWING NO. BENBROOK-5
DWG. SER	REV. B	



SPRING-LOADED STAINLESS TRASH DISPOSAL DOOR WITH 21qt TRASH CONTAINER ACCESS FROM PULL-OUT DRAWER BELOW

COMPARTMENT

#1 NOT BEING USED IN THIS LAYOUT

#2 PULL-OUT DRAWER

INSIDE DIMS: 3.00h x 9.00w x 14.00d  
 LOCKING STAINLESS STEEL FLUSH PULL LATCH  
 TOTAL DRAWER WEIGHT RATING = 10 lbs.

#3 DOOR OPENING: 8.25h x 32.00w

INSIDE DIMS: 8.25h x 32.00w x 10.25d  
 HINGED POLY DOORS WITH HOLD-OPENS  
 CENTER SQUEEZE LATCH  
 43" MINIMUM HEADROOM BELOW THE CABINET  
 TOTAL CABINET WEIGHT RATING = 10 lbs.

INVENTORY CONTROL SYSTEM

CABINETS TO BE ALUMINUM

THIS DRAWING IS FOR REPRESENTATIONAL PURPOSES ONLY. DETAILS ARE CONCEPTUAL AND ARE SUBJECT TO CHANGE DURING DESIGN AND CONSTRUCTION DIMENSIONS ARE APPROXIMATE UNLESS NOTED OTHERWISE TO MEET A SPECIFIC CUSTOMER NEED.

BENBROOK

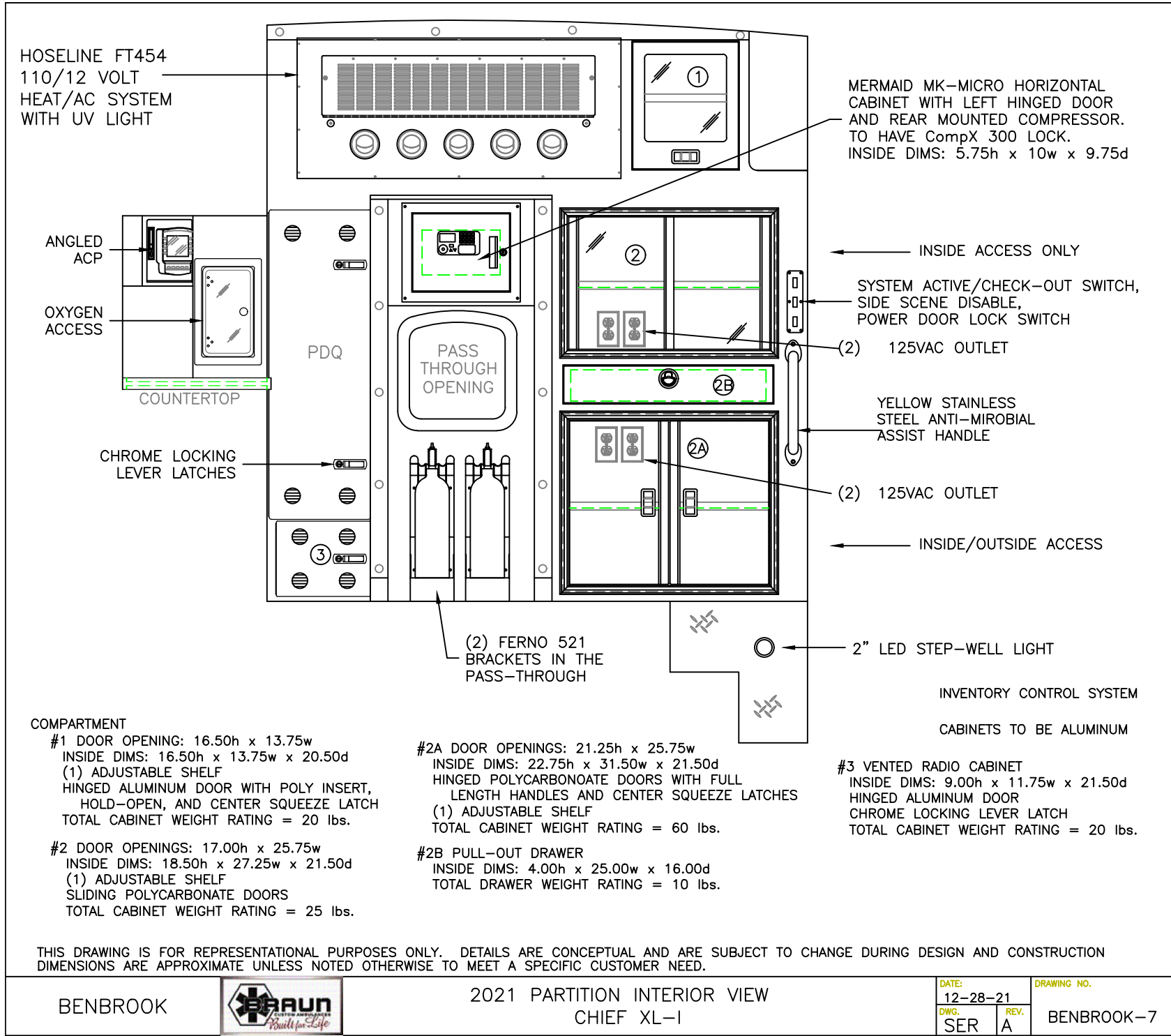


2021 CURBSIDE INTERIOR VIEW  
 CHIEF XL-I

1:20

DATE:	01-04-22
DWG.:	SER
REV.:	B

DRAWING NO.  
 BENBROOK-6



**COMPARTMENT**

**#1 DOOR OPENING:** 16.50h x 13.75w  
**INSIDE DIMS:** 16.50h x 13.75w x 20.50d  
 (1) ADJUSTABLE SHELF  
 HINGED ALUMINUM DOOR WITH POLY INSERT, HOLD-OPEN, AND CENTER SQUEEZE LATCH  
 TOTAL CABINET WEIGHT RATING = 20 lbs.

**#2 DOOR OPENINGS:** 17.00h x 25.75w  
**INSIDE DIMS:** 18.50h x 27.25w x 21.50d  
 (1) ADJUSTABLE SHELF  
 SLIDING POLYCARBONATE DOORS  
 TOTAL CABINET WEIGHT RATING = 25 lbs.

**#2A DOOR OPENINGS:** 21.25h x 25.75w  
**INSIDE DIMS:** 22.75h x 31.50w x 21.50d  
 HINGED POLYCARBONATE DOORS WITH FULL LENGTH HANDLES AND CENTER SQUEEZE LATCHES  
 (1) ADJUSTABLE SHELF  
 TOTAL CABINET WEIGHT RATING = 60 lbs.

**#2B PULL-OUT DRAWER**  
**INSIDE DIMS:** 4.00h x 25.00w x 16.00d  
 TOTAL DRAWER WEIGHT RATING = 10 lbs.

**#3 VENTED RADIO CABINET**  
**INSIDE DIMS:** 9.00h x 11.75w x 21.50d  
 HINGED ALUMINUM DOOR  
 CHROME LOCKING LEVER LATCH  
 TOTAL CABINET WEIGHT RATING = 20 lbs.

THIS DRAWING IS FOR REPRESENTATIONAL PURPOSES ONLY. DETAILS ARE CONCEPTUAL AND ARE SUBJECT TO CHANGE DURING DESIGN AND CONSTRUCTION DIMENSIONS ARE APPROXIMATE UNLESS NOTED OTHERWISE TO MEET A SPECIFIC CUSTOMER NEED.

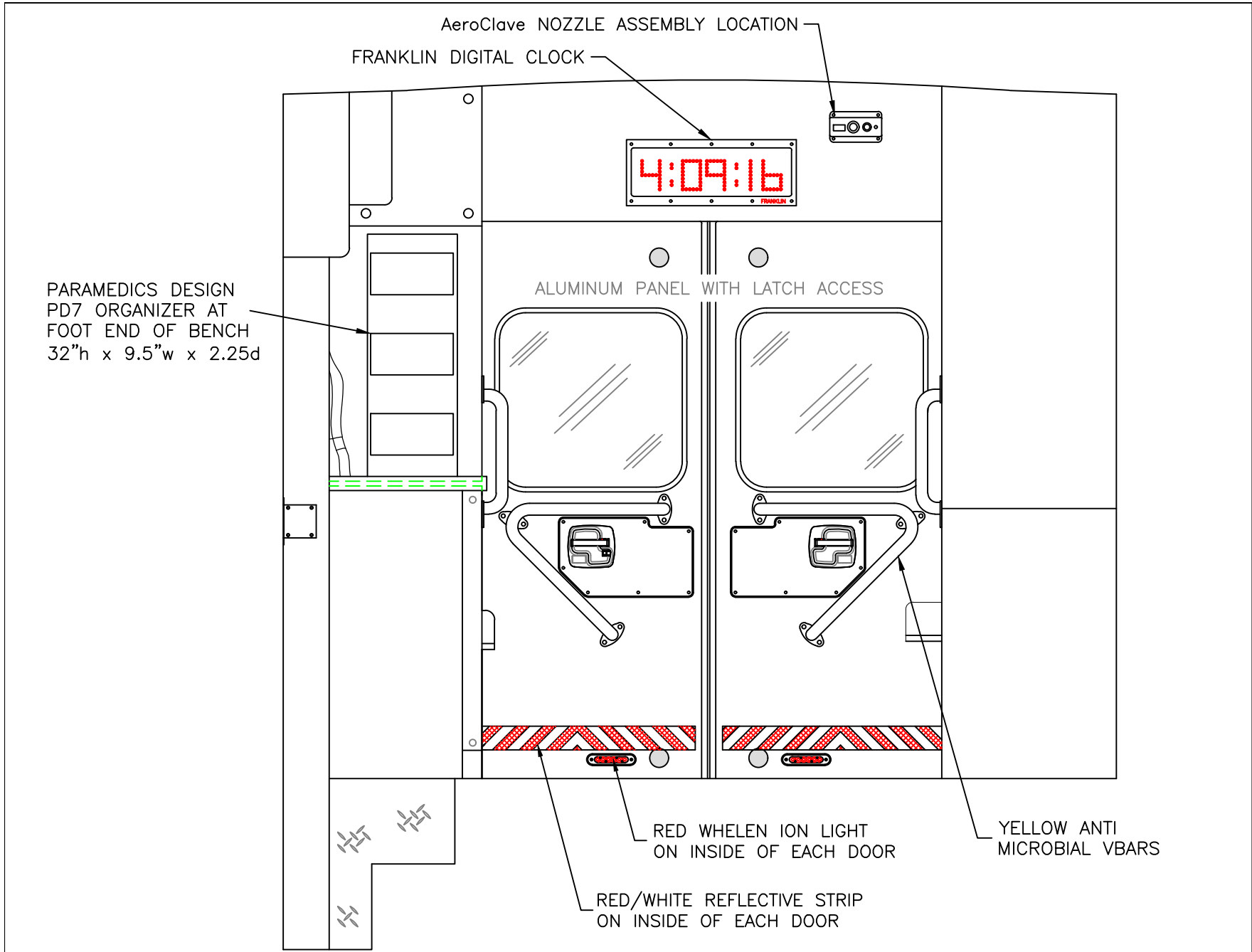
BENBROOK



2021 PARTITION INTERIOR VIEW  
 CHIEF XL-1

DATE:  
 12-28-21  
 DWG. SER  
 REV. A

DRAWING NO.  
 BENBROOK-7



AeroClave NOZZLE ASSEMBLY LOCATION  
 FRANKLIN DIGITAL CLOCK

PARAMEDICS DESIGN  
 PD7 ORGANIZER AT  
 FOOT END OF BENCH  
 32" h x 9.5" w x 2.25 d

ALUMINUM PANEL WITH LATCH ACCESS

RED WHELEN ION LIGHT  
 ON INSIDE OF EACH DOOR

YELLOW ANTI  
 MICROBIAL VBARs

RED/WHITE REFLECTIVE STRIP  
 ON INSIDE OF EACH DOOR

THIS DRAWING IS FOR REPRESENTATIONAL PURPOSES ONLY. DETAILS ARE CONCEPTUAL AND ARE SUBJECT TO CHANGE DURING DESIGN AND CONSTRUCTION DIMENSIONS ARE APPROXIMATE UNLESS NOTED OTHERWISE TO MEET A SPECIFIC CUSTOMER NEED.

BENBROOK



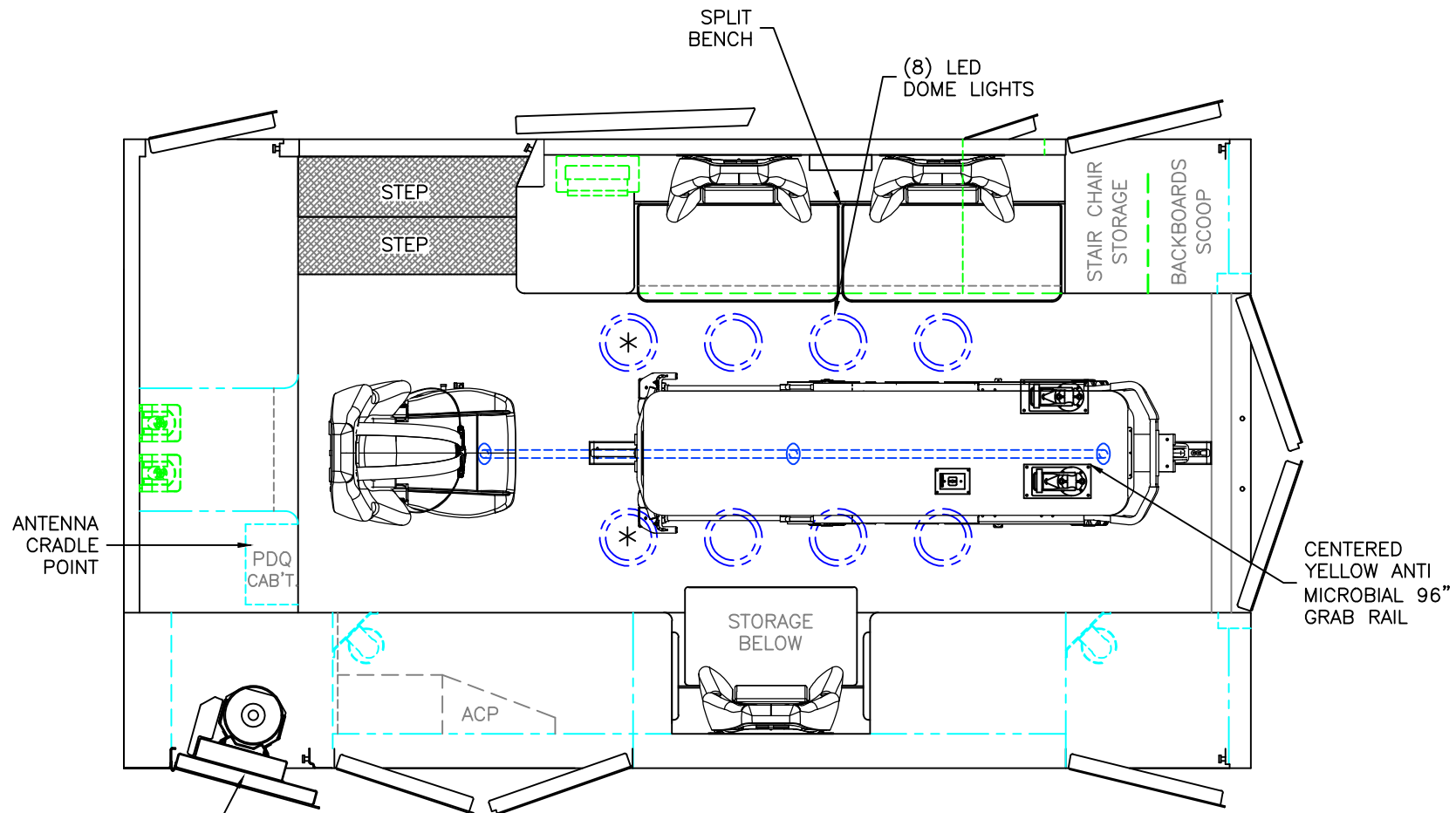
2021 REAR INTERIOR VIEW  
 CHIEF XL-I

1:12

DATE:	12-28-21
DWG. REV.	SERA

DRAWING NO.	BENBROOK-8
-------------	------------





"EZ O2 LIFT"  
OXYGEN SYSTEM

 = (2) RECESSED CEILING IV HANGER LOCATIONS

 = (1) CEILING OXYGEN OUTLET

\* (2) ANTENNA BASES LOCATED OUTBOARD OF DOME LIGHTS WITH COAX SERVICE LOOP

STRYKER POWER LOAD CENTER MOUNT COT HARDWARE  
(CUSTOMER SUPPLIED)

MODULE WIDTH = 96"  
MODULE LENGTH = 172"  
MODULE HEAD ROOM = 74"

THIS DRAWING IS FOR REPRESENTATIONAL PURPOSES ONLY. DETAILS ARE CONCEPTUAL AND ARE SUBJECT TO CHANGE DURING DESIGN AND CONSTRUCTION DIMENSIONS ARE APPROXIMATE UNLESS NOTED OTHERWISE TO MEET A SPECIFIC CUSTOMER NEED.

BENBROOK



2021 FLOOR INTERIOR VIEW  
CHIEF XL-1

1:22

DATE:	01-04-22	DRAWING NO.
DWG.	SER	REV.
		B

BENBROOK-9